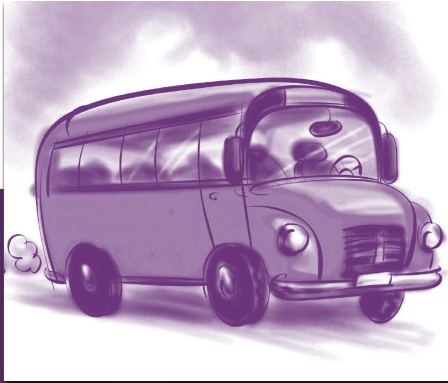


School Wide Positive Behavior Support



STAR

Allentown
Learning
Achievement
School



Socialization
Task
Area
Responsibility

STAR produces the following outcomes:

- A school wide climate of respect, safety, pride, and responsibility.
- Increased engaged learning time for students.
- Unity of purpose in our school community.

Mission Statement:

Allentown Learning Achievement School places an emphasis on identifying an individual's strengths and abilities by employing a student-centered approach, whereby various systems of care and evidence-based practices are utilized to assist the student to dream big, plan thoroughly, and engage wholeheartedly in achieving educational and post graduation success.



Socialization

S

Setting → Expectation ↓	Classroom	Hallway	Bus	Community
Socialization	<ul style="list-style-type: none">• Use appropriate tone and language.• Keep topics of conversation appropriate.• Keep hands and feet and materials to yourself.• Refrain from verbal aggression.	<ul style="list-style-type: none">• Use appropriate language when talking to others.• Maintain personal space.	<ul style="list-style-type: none">• Speak at appropriate volume.• Use proper language.• Refrain from physical and verbal aggression.• Speak kindly.• Keep hands and feet to yourself.	<ul style="list-style-type: none">• Use polite language and appropriate topics of conversation.

Includes, but is not limited to.

Task

T

Setting → Expectation ↓	Classroom	Hallway	Bus	Community
Task	<ul style="list-style-type: none">• Actively participate during class instruction.• Focus on assigned work.• Complete all assignments and make up work on time.• Be prepared with your materials.• Accept and follow directions.	<ul style="list-style-type: none">• Transition smoothly to assigned area.• Keep it moving.	<ul style="list-style-type: none">• Enter and exit bus/van in a timely manner.• Get off at designated stop.• Be on time.	<ul style="list-style-type: none">• Actively participate in all activities.• Complete all tasks.• Be accountable.• Be prepared.• Verbally communicate your needs.• Be engaged and attentive.

Includes, but is not limited to.

Area

A

Setting → Expectation ↓	Classroom	Hallway	Bus	Community
Area	<ul style="list-style-type: none">• Stay in designated seat.• Ask permission to leave assigned area.	<ul style="list-style-type: none">• No wandering in hallway.• Maintain personal space.	<ul style="list-style-type: none">• Stay in assigned seat.• Refrain from standing/walking around unless entering or exiting.	<ul style="list-style-type: none">• Stay with assigned group.

Includes, but is not limited to.

Responsibility

R

Setting → Expectation ↓	Classroom	Hallway	Bus	Community
Responsibility	<ul style="list-style-type: none">• Follow directions the first time given.• Raise hand for assistance.• Be prepared.• Be responsible for own behavior.	<ul style="list-style-type: none">• Following directions when transitioning from one location to another.	<ul style="list-style-type: none">• Follow bus driver/aide directions the first time given.• Respect bus property.• Respect others.	<ul style="list-style-type: none">• Follow direction first time given.• Dress appropriately and follow dress code.• Follow school and community rules in all settings.

Includes, but is not limited to.



Recognizing Positive Behaviors

School Wide Reinforcement Plan

- Each student earns STAR cards from any staff member in the building by modeling expected positive behaviors.
- STAR cards may be redeemed through the ALAS School Store.
- Intermittent trips and quarterly trips can be earned.
- NOVA lottery drawings will be held.



For more information, contact
Carbon Lehigh Intermediate Unit #21
4210 Independence Drive
Schnecksville, PA 18078
Phone: 610-769-4111
Fax: 610-769-1290



The CLIU #21 Central Service Center is accessible to all.
If you need an accommodation to fully participate, please
call the CLIU #21 at 610-769-4111.

*"CLIU is a service agency committed to
Helping Children Learn."*

The Carbon Lehigh Intermediate Unit is an equal opportunity employer and does not discriminate on the basis of race, color, religion, national origin, age, marital status, sex or non-relevant handicap in activities, programs or employment practices. For information regarding civil rights or grievance procedures, contact Ms. Deborah Popson, Section 504 Coordinator, or Ms. Michele E. Edwards, SPHR, Title IX and ADA Coordinator, at the Carbon Lehigh Intermediate Unit, 4210 Independence Drive, Schnecksville PA 18078-2580, 800-223-4821
August 2016